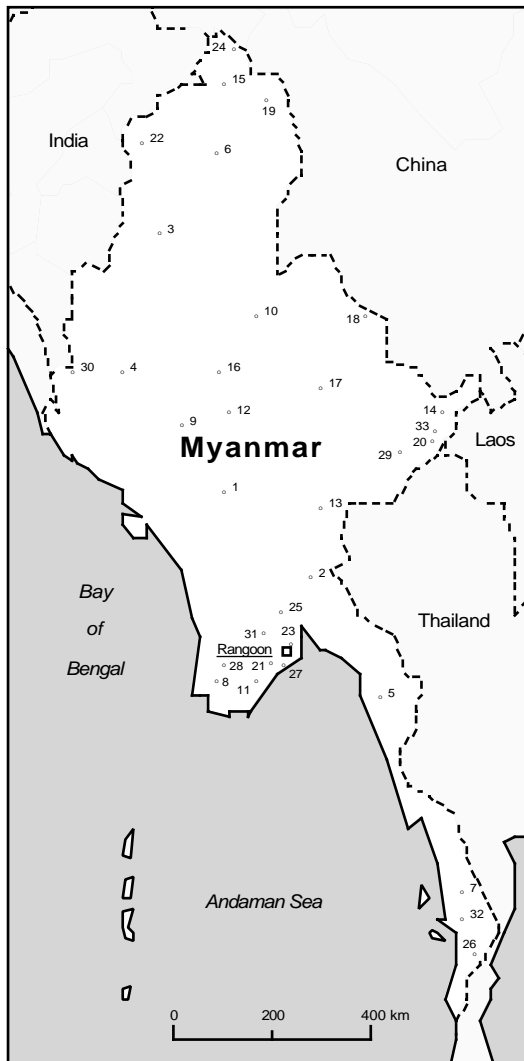


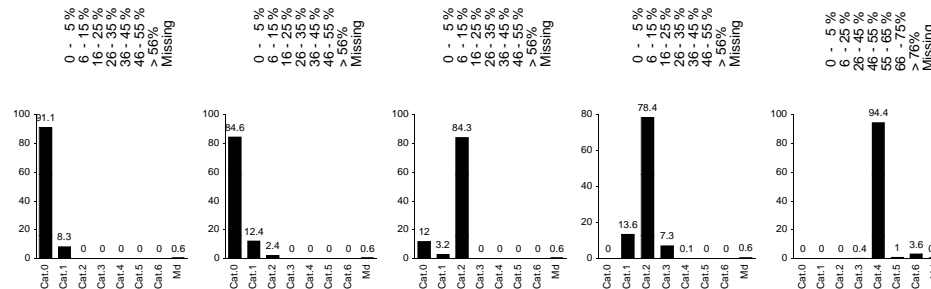
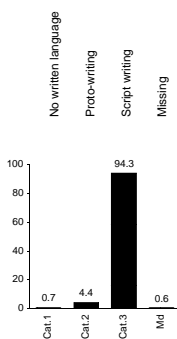
MYANMAR

Surface (sqkm):	676550
Population 1965 / 1990 (000):	24167 41600
Population density 1965 / 1990 (per sqkm):	357 615
Population per sqkm of agricultural land 1965:	210
Average annual population change 1965-1980 (percent):	
Average annual population change 1980-1989 (percent):	2.1 ¹⁾
Population 1960 UN / estimated (000):	22325 21527
Number of identified cultural units	33
Population 1960 identified / coded (percent):	99 99

Geographical location of the cultural units presented in the following tables.
 (The numbers refer to ID-Nr.)



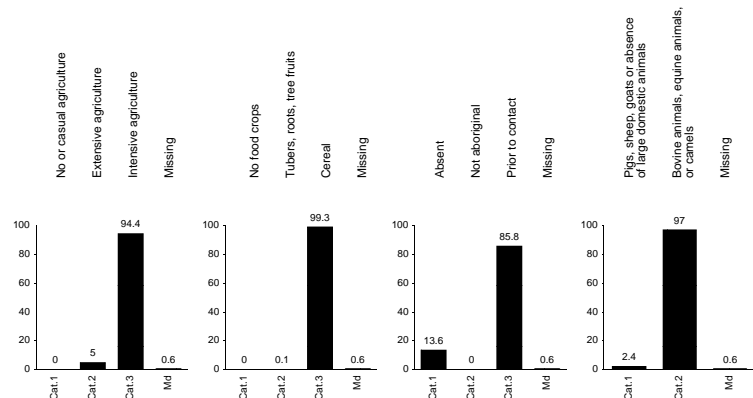
Tibeto-Burman 85.2%
 Daic 7%
 A.Asianic: South, Monic 1.9%
 Indo-European: Indo-Aryan 1.8%
 Dravidian 1.6%
 Sinitic 1.4%
 A.As.: N, Palaungic-Khmuic 1%



ID-Nr.	NAME OF CULTURAL UNIT	POPULATION (000)	POPULATION (%)	LANGUAGE FAMILY	WRITTEN LANGUAGE
					M A R
1	Burmans	15400	71.8	Tibeto-Burman	3
2	Karen	1800	8.4	Tibeto-Burman	3
3	Shan	1400	6.5	Daic	3
4	Chin	432	2.0	Tibeto-Burman	2
5	Mon	400	1.9	Austro-Asiatic: South, Monic	3
6	Kachin	320	1.5	Tibeto-Burman	2
7	Chinesen	300	1.4	Sinitic	3
8	Tamil	180	0.8	Dravidian	3
9	Hindi	160	0.7	Indo-European: Indo-Aryan	3
10	Palaung	160	0.7	A.As.: North, Palaungic-Khmuic	2
11	Telugu	160	0.7	Dravidian	3
12	Bengali Muslims	110	0.5	Indo-European: Indo-Aryan	3
13	Kayah	100	0.5	Tibeto-Burman	3
14	Akha	65	0.3	Tibeto-Burman	1
15	Lahu	50	0.2	Tibeto-Burman	3
16	Oriya	50	0.2	Indo-European: Indo-Aryan	3
17	Wa	50	0.2	A.As.: North, Palaungic-Khmuic	1
18	Khun	40	0.2	Daic	3
19	Lisu	40	0.2	Tibeto-Burman	3
20	Lü	40	0.2	Daic	3
21	Indo-Nepali	30	0.1	Indo-European: Indo-Aryan	3
22	Naga	25	0.1	Tibeto-Burman	1
23	Punjabi	25	0.1	Indo-European: Indo-Aryan	3
24	Minchia	20	0.1	Tibeto-Burman	2
25	Gujarati	15	0.1	Indo-European: Indo-Aryan	3
26	Siamese	15	0.1	Daic	3
27	English	10	0.05	Indo-European: English	3
28	Kerala	10	0.05	Dravidian	3
29	Lao	10	0.05	Daic	3
30	Lakher	8	0.04	Tibeto-Burman	1
31	Malays	7	0.03	Austronesian	1
32	Selung	2	0.01	Austronesian	1
33	Miao	1	0.005	Miao-Yao	3

GATHERING	HUNTING	FISHING	ANIMAL HUSBANDRY	AGRICULTURE
M A R	M A R	M A R	M A R	M A R
0 0 0	0 0 0	2 2 2	2 2 2	6 6 4
0 0 0	1 1 1	2 2 2	1 1 1	6 6 4
1 1 1	0 0	0 0	3 3 3	6 4
0 0 0	2 2 2	1 1 1	1 1 1	6 6 4
0 0 0	1 1 1	2 2 2	2 2 2	8 8 6
0 0 0	0 0	0 0 0	2 2 2	8 8 6
0 0 0	0 0 0	0 0 0	2 2 2	8 8 6
0 0 0	1 1 1	2 2 2	1 1 1	6 4
1 1 1	2 2 2	1 1 1	1 1 1	5 5 3
0 0 0	0 0	1 1 1	1 1 1	8 6
0 0 0	0 0 0	1 1 1	1 1 1	8 8 6
0 0 0	0 0 0	2 2 2	2 2 2	6 4
0 0 0	1 1 1	0 0	2 2 2	8 6
0 0 0	0 0 0	1 1 1	2 2 2	6 4
0 0 0	0 0 0	0 0 0	2 2 2	7 7 5
0 0 0	0 0 0	1 1 1	2 2 2	7 7 5
0 0 0	0 0 0	2 2 2	1 1 1	7 7 5
0 0 0	1 1 1	0 0 0	4 4 4	5 5 3
0 0 0	0 0 0	1 1 1	3 3 3	6 6 4
0 0 0	0 0 0	2 2 2	2 2 2	6 4
0 0 0	2 2 2	1 1 1	1 1 1	6 6 4
0 0 0	0 0 0	2 2 2	2 2 2	6 4
1 1 1	1 1 1	8 8 6	0 0 0	0 0 0
0 0 0	1 1 1	1 1 1	2 2 2	6 6 4

Myanmar (5)



INTENSITY OF CULTIVATION

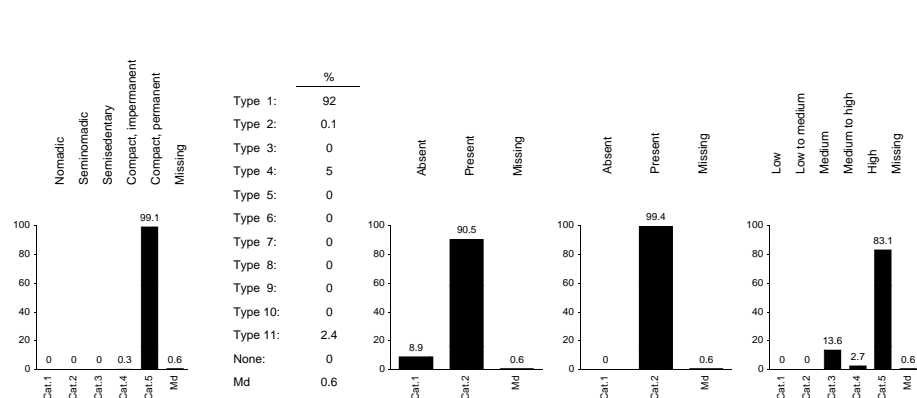
MAJOR CROP TYPE

ANIMALS AND PLOW CULTIVATION

PREDOMINANT TYPE OF ANIMAL HUSBANDRY

	M	A	R	M	A	R	M	A	R	M	A	R
1 Burmans	6	6	3	6	6	3	3	3	3	7	7	2
2 Karen	6	6	3	6	6	3	1	1	1	7	7	2
3 Shan	6	3	3	6	3	3	3	3	3	7	7	2
4 Chin	3	3	2	6	6	3	1	1	1	7	7	2
5 Mon	6	3	3	6	3	3	3	3	3	7	7	2
6 Kachin	3	3	2	6	6	3	1	1	1	7	7	2
7 Chinesen	6	6	3	6	6	3	3	3	3	7	7	2
8 Tamil	6	6	3	6	6	3	3	3	3	7	7	2
9 Hindi	6	6	3	6	6	3	3	3	3	7	7	2
10 Palaung	3	3	2	6	6	3	1	1	1	7	7	2
11 Telugu	6	6	3	6	6	3	3	3	3	7	7	2
12 Bengali Muslims	6	3	3	6	3	3	3	3	3	7	7	2
13 Kayah	6	3	3	6	3	3	1	1	1	7	7	2
14 Akha	3	3	2	6	6	3	1	1	1	7	7	2
15 Lahu												
16 Oriya	6	3	3	6	3	3	3	3	3	7	7	2
17 Wa	3	3	2	6	6	3	3	3	3	7	7	2
18 Khun												
19 Lisu												
20 Lü	6	3	3	6	3	3	3	3	3	7	7	2
21 Indo-Nepali	6	3	3	6	3	3	3	3	3	7	7	2
22 Naga	3	2	3	6	3	3	1	1	1	7	7	2
23 Punjabi	5	6	3	6	6	3	3	3	3	7	7	2
24 Minchia	6	6	3	6	6	3	3	3	3	7	7	2
25 Gujarati	5	5	3	6	6	3	3	3	3	7	7	2
26 Siamese	6	6	3	6	6	3	3	3	3	7	7	2
27 English	5	5	3	5	5	2	3	3	3	7	7	2
28 Kerala	6	6	3	6	6	3	3	3	3	7	7	2
29 Lao	6	3	3	6	3	3	3	3	3	7	7	2
30 Lakher	3	3	2	6	6	3	1	1	1	7	7	2
31 Malays	6	3	3	6	3	3	3	3	3	7	7	2
32 Selung	1	1	1	1	1	1	1	1	1	7	7	2
33 Miao	6	6	3	6	6	3	1	1	1	7	7	2

Myanmar (6)



SETTLEMENT PATTERNS

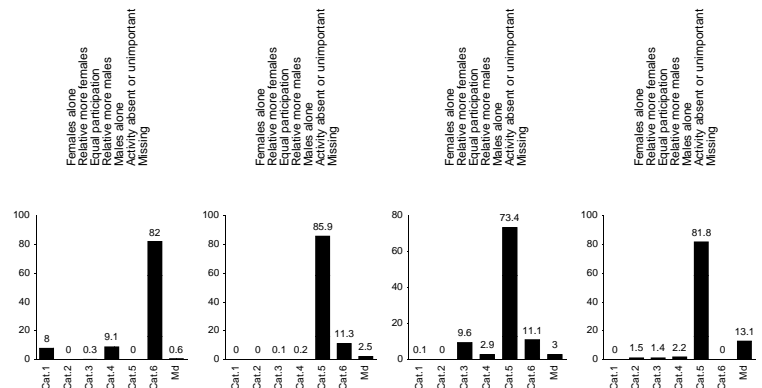
SUBSISTENCE TYPE

METAL WORKING

WEAVING

AGRO-TECHNICAL LEVEL

	M	A	R	M	A	R	M	A	R	M	A	R
	7	7	5	1	2	2	2	2	2	15	5	3
	7	7	5	1	1	1	2	2	2	12	3	3
	7	5	5	1	2	2	2	2	2	15	5	5
	7	7	5	4	2	2	2	2	2	12	3	3
	7	7	5	1	2	2	2	2	2	15	5	5
	8	8	5	11	2	2	2	2	2	15	5	5
	7	7	5	4	2	2	2	2	2	12	3	3
	7	7	5	1	2	2	2	2	2	15	5	5
	7	5	5	11	2	2	2	2	2	15	5	5
	7	7	5	1	2	2	2	2	2	15	5	5
	7	7	5	4	2	2	2	2	2	14	4	4
	7	5	5	1	2	2	2	2	2	15	5	5
	7	7	5	1	2	2	2	2	2	15	5	5
	7	7	5	11	2	2	2	2	2	14	4	4
	7	5	5	1	2	2	2	2	2	15	5	5
	7	7	5	4	2	2	2	2	2	14	4	4
	7	7	5	11	2	2	2	2	2	15	5	5
	1	1	1	5	1	1	1	1	1	6	1	1
	6	6	5	1	2	2	2	2	2	13	3	3



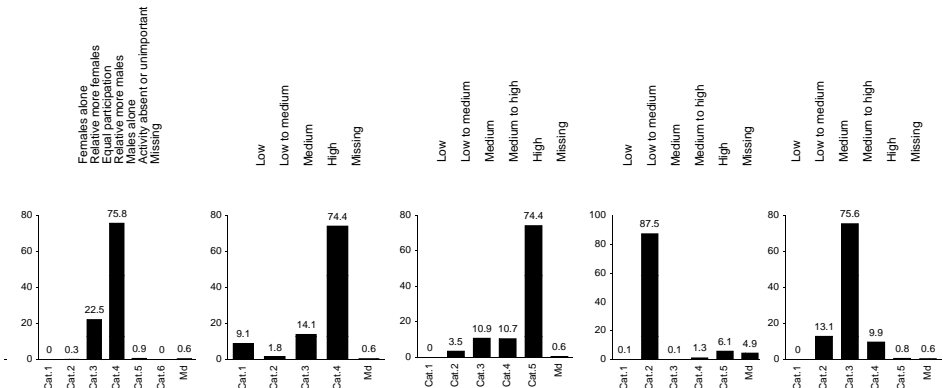
SEX DIFFERENCES IN GATHERING

SEX DIFFERENCES IN HUNTING

SEX DIFFERENCES IN FISHING

SEX DIFFERENCES IN ANIMAL HUSBANDRY

	M	A	R	M	A	R	M	A	R	M	A	R
1 Burmans	8	8	6	1	1	5	1	1	5	1	1	5
2 Karen	2	2	4	1	1	5	4	4	3	•	•	•
3 Shan	6	1		8	6		8	6		1	5	
4 Chin	•	8	6	1	1	5	2	2	4	•	•	•
5 Mon	8	6		•	•		•	•		1	5	
6 Kachin	6	6	1	1	1	5	8	8	6	5	5	2
7 Chinesen	•	8	6	•	8	6	•	8	6	•	•	•
8 Tamil	8	8	6	8	8	6	•	2	4	1	1	5
9 Hindi	8	8	6	8	8	6	8	8	6	1	1	5
10 Palaung	8	8	6	8	8	6	8	8	6	2	2	4
11 Telugu	8	8	6	1	1	5	1	1	5	3	3	3
12 Bengali Muslims	8	6		8	6		•	•		2	4	
13 Kayah	2	4		1	5		4	3		•	•	
14 Akha	4	4	3	1	1	5	4	4	3	4	4	3
15 Lahu												
16 Oriya	8	6		8	6		1	5		2	4	
17 Wa	8	8	6	1	1	5	4	4	3	2	2	4
18 Khun												
19 Lisu												
20 Lü	2	4		2	4		4	3		2	4	
21 Indo-Nepali	8	6		8	6		8	6		3	3	
22 Naga	8	6		1	5		1	5		•	•	
23 Punjabi	8	8	6	1	1	5	1	1	5	2	2	4
24 Minchia	8	8	6	8	8	6	1	1	5	•	•	•
25 Gujarati	8	8	6	8	8	6	6	6	1	3	3	3
26 Siamese	8	8	6	4	4	3	1	1	5	4	4	3
27 English	8	8	6	1	1	5	•	1	5	2	2	4
28 Kerala	8	8	6	1	1	5	1	1	5	2	2	4
29 Lao	2	4		2	4		4	3		2	4	
30 Lakher	8	8	6	1	1	5	1	1	5	3	3	3
31 Malays	8	6		1	5		1	5		2	4	
32 Selung	8	8	6	1	1	5	2	2	4	8	8	6
33 Miao	8	8	6	1	1	5	1	1	5	6	6	1



SEX DIFFERENCES IN AGRICULTURE

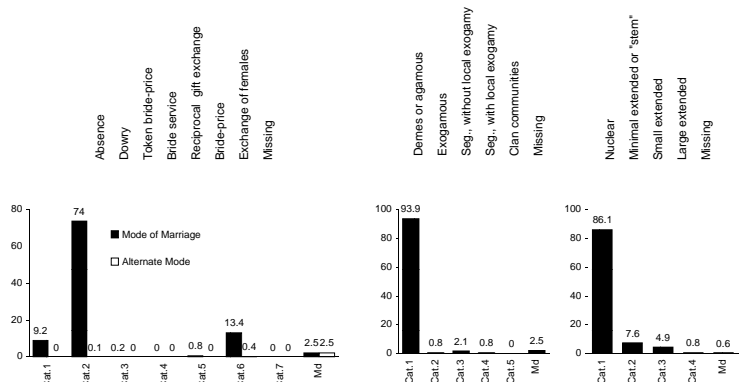
ASYMETRIC WORK DISTRIBUTION

MALE DOMINATION IN SUBSISTENCE PRODUCTION

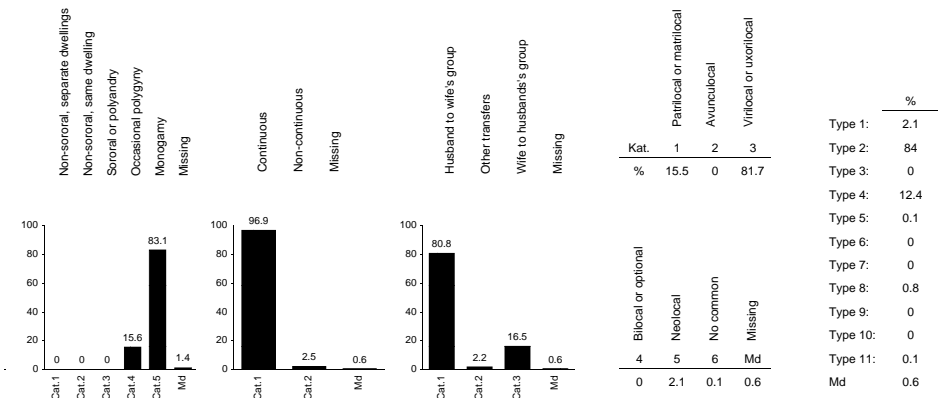
INTER-GENERATIONAL TRANSFER PRINCIPALS

AGRO-PASTORAL INTENSITY

	M	A	R	M	A	R	M	A	R	M	A	R	M	A	R
1 Burmans	2	2	4	4	4	3	5	7	2	21	3				
2 Karen	4	4	3	1	3		3	8	2	14	2				
3 Shan	3	3		3	4		4	9	2	28	4				
4 Chin	4	4	3	3	4		4	12	5	14	2				
5 Mon	3	3		3	2		2	•	•	14	2				
6 Kachin	2	2	4	2	3		3	12	5	21	3				
7 Chinesen	•	3	3	3	2		2	•	•	27	4				
8 Tamil	2	2	4	4	5		5	12	5	21	3				
9 Hindi	1	1	5	4	5		5	11	4	27	4				
10 Palaung	4	4	3	3	4		4	•	•	27	4				
11 Telugu	2	2	4	3	4		4	12	5	32	5				
12 Bengali Muslims	2	2	4	4	5		5	12	5	21	3				
13 Kayah	4	4	3	1	3		3	8	2	14	2				
14 Akha	5	5	2	2	3		3	12	5	12	2				
15 Lahu															
16 Oriya	2	2	4	4	5		5	11	4	18	3				
17 Wa	4	4	3	3	4		4	•	•	18	3				
18 Khun															
19 Lisu															
20 Lü	4	4	3	3	4		4	8	2	21	3				
21 Indo-Nepali	3	3		1	3		3	11	4	27	4				
22 Naga	4	4	3	3	2		2	11	4	21	3				
23 Punjabi	1	1	5	4	5		5	12	5	27	4				
24 Minchia	4	4	3	3	2		2	11	4	24	4				
25 Gujarati	4	4	3	1	3		3	12	5	24	4				
26 Siamese	4	4	3	3	4		4	7	2	16	3				
27 English	2	2	4	4	5		5	10	3	30	5				
28 Kerala	2	2	4	4	5		5	5	1	28	4				
29 Lao	4	4	3	3	4		4	8	2	21	3				
30 Lakher	4	4	3	3	4		4	12	5	14	2				
31 Malays	4	4	3	3	4		4	10	3	21	3				
32 Selung	8	8	6	4	5		5	•	•	1	1				
33 Miao	2	2	4	2	3		3	11	4	21	3				



	MODE OF MARRIAGE			ALTERNATE MODE OF MARRIAGE			COMMUNITY MARRIAGE ORGANIZATION			FAMILY ORGANIZATION		
	M	A	R	M	A	R	M	A	R	M	A	R
1 Burmans	7	7	2	8	8	8	1	1	1	1	1	1
2 Karen	6	6	1	8	8	8	3	3	1	1	1	1
3 Shan	1	6		8	8		1	1		2	2	
4 Chin	1	1	6	8	8	8	3	3	1	1	1	1
5 Mon		1	1	
6 Kachin	1	1	6	8	8	8	2	2	3	3	3	3
7 Chinesen	1	1	6	8	8	8	3	3	1	3	3	3
8 Tamil	7	7	2	8	8	8	3	3	1	3	3	3
9 Hindi	4	4	5	8	8	8	4	4	2	2	2	2
10 Palaung	1	1	6	8	8	8	1	1	1	1	1	1
11 Telugu	7	7	2	8	8	8	3	3	1	3	3	3
12 Bengali Muslims	1	6		8	8		5	4		4	4	
13 Kayah	6	1		8	8		3	1		1	1	
14 Akha	6	6	1	8	8	8	3	3	1	1	1	1
15 Lahu												
16 Oriya	7	2		1	6		5	4		4	4	
17 Wa	1	1	6	8	8	8	2	2	3	2	2	2
18 Khun												
19 Lisu												
20 Lü	1	6		8	8		1	1		1	1	
21 Indo-Nepali	7	2		8	8		2	3		3	3	
22 Naga	3	3		8	8		2	3		1	1	
23 Punjabi	7	7	2	1	1	6	2	2	3	3	3	3
24 Minchia	1	1	6	8	8	8	1	1	1	3	3	3
25 Gujarati	1	1	6	7	7	2	5	5	4	1	1	1
26 Siamese	3	3	3	8	8	8	3	3	1	2	2	2
27 English	7	7	2	8	8	8	3	3	1	6	2	2
28 Kerala	6	6	1	8	8	8	3	3	1	4	4	4
29 Lao	1	6		8	8		1	1		1	1	
30 Lakher	1	1	6	8	8	8	3	3	1	1	1	1
31 Malays	1	6		8	8		3	1		3	3	
32 Selung	6	6	1	8	8	8	3	3	1	1	1	1
33 Miao	1	1	6	8	8	8	2	2	3	1	1	1



	MARITAL COMPOSITION			CONTINUITY OF MARITAL RESIDENCE WITH KIN			TRANSFER OF RESIDENCE AT MARRIAGE			MARITAL RESIDENCE WITH KIN			FAMILY TYPE		
	M	A	R	M	A	R	M	A	R	M	A	R	M	A	R
1 Burmans	1	1	5	4	4	1	3	3	1	3	3	3	2		
2 Karen	1	1	5	4	4	1	3	3	1	3	3	3	2		
3 Shan	2	2	4	4	4	1	1	3		1	1	1	4		
4 Chin	2	2	4	4	4	1	1	3		1	1	1	2		
5 Mon	1	1	5	3	2		2	2		6	5		1		
6 Kachin	2	2	4	4	4	1	1	3		1	1	1	4		
7 Chinesen	2	2	4	4	4	1	1	3		1	1	1	4		
8 Tamil	2	2	4	4	4	1	1	3		1	1	1	4		
9 Hindi	.	.	.	4	4	1	1	3		1	1	1	4		
10 Palaung	2	2	4	4	4	1	1	3		3	3	3	2		
11 Telugu	2	2	4	4	4	1	1	3		1	1	1	4		
12 Bengali Muslims	2	2	4	4	4	1	1	3		1	1	1	8		
13 Kayah	1	1	5	4	4	1	3	1		3	3		2		
14 Akha	2	2	4	4	4	1	1	3		1	1	1	2		
15 Lahu															
16 Oriya	2	2	4	1	2		1	3		1	1		8		
17 Wa	1	1	5	4	4	1	1	3		1	1	1	4		
18 Khun															
19 Lisu															
20 Lü	2	2	4	1	2		2	2		6	5		1		
21 Indo-Nepali	2	2	4	1	2		1	3		3	3		4		
22 Naga	1	1	5	4	4	1	1	3		1	1	1	2		
23 Punjabi	1	1	5	4	4	1	1	3		1	1	1	4		
24 Minchia	2	2	4	4	4	1	1	3		1	1	1	4		
25 Gujarati	2	2	4	4	4	1	1	3		1	1	1	2		
26 Siamese	2	2	4	4	4	1	3	3	1	3	3	3	5		
27 English	1	1	5	4	4	1	1	3		3	3	3	4		
28 Kerala	2	2	4	4	4	1	4	2		6	7	6	11		
29 Lao	2	2	4	1	2		2	2		6	5		1		
30 Lakher	2	2	4	4	4	1	1	3		1	1	1	2		
31 Malays	2	2	4	3	2		1	3		3	3		4		
32 Selung	2	2	4	3	3	2	2	2		5	6	5	1		
33 Miao	2	2	4	4	4	1	1	3		1	1	1	2		

Kat.	1	2	3	%
Patrilocal or matrilocal	15.5	0	81.7	
Avunculocal				
Virilocal or uxorilocal				

Type	%
Type 1:	2.1
Type 2:	84
Type 3:	0
Type 4:	12.4
Type 5:	0.1
Type 6:	0
Type 7:	0
Type 8:	0.8
Type 9:	0
Type 10:	0
Type 11:	0.1
Md	0.6

Myanmar (11)

Kat.	1	2	3
%	90.3	0	1.5

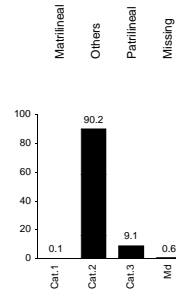
Kat.	1	2	3
%	99.4	0	0

Kat.	1	2	3
%	11.7	79.8	0

Sibs	Phratres	Moieties	Missing
4	5	6	Md
6.7	0.2	0.8	0.6

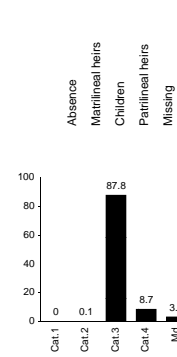
Sibs	Phratres	Moieties	Missing
4	5	6	Md
0.1	0	0	0.6

Ramages	Quasi-lineages	None	Missing
4	5	6	Md
0	0	7.9	0.6

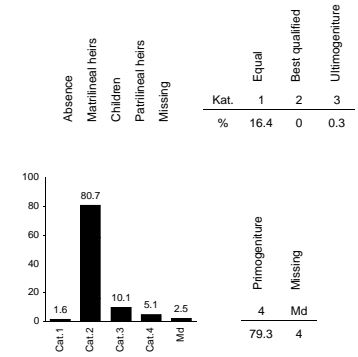


Myanmar (12)

Type	%
Type 1:	8.2
Type 2:	0.9
Type 3:	0.1
Type 4:	0
Type 5:	90.2
Type 6:	0
Type 7:	0
Type 8:	0
None:	0
Md	0.6



Kat.	1	2	3
%	14.5	0	0.1



LARGEST PATRILINEAL KIN GROUP

LARGEST MATRILINEAL KIN GROUP

COGNATIC KIN GROUPS

DESCENT (MAJOR TYPE)

KIN TYPE

INHERITANCE RULE FOR LAND

INHERITANCE DISTRIBUTION FOR LAND

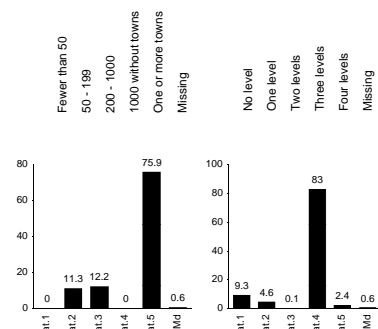
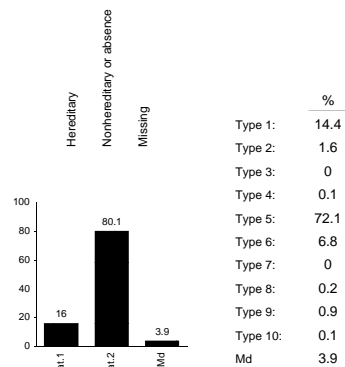
INHERITANCE RULE FOR MOVABLE PROPERTY

INHERITANCE DISTRIBUTION FOR MOVABLE PROPERTY

	LARGEST PATRILINEAL KIN GROUP			LARGEST MATRILINEAL KIN GROUP			COGNATIC KIN GROUPS			DESCENT (MAJOR TYPE)		
	M	A	R	M	A	R	M	A	R	M	A	R
1 Burmans	1	1		1	1		2	2		6	6	2
2 Karen	1	1		1	1		1	1		6	6	2
3 Shan	1			1			2			6	2	
4 Chin	4	4		1	1		6	6		1	1	3
5 Mon	1			1			1			6	2	
6 Kachin	4	4		1	1		6	6		1	1	3
7 Chinesen	4	4		1	1		6	6		•	1	3
8 Tamil	3	3		1	1		6	6		1	1	3
9 Hindi	6	6		1	1		2	2		•	1	3
10 Palaung	1	1		1	1		1	1		6	6	2
11 Telugu	4	4		1	1		6	6		1	1	3
12 Bengali Muslims	4			1			2			1	1	3
13 Kayah	1			1			1			6	2	
14 Akha	3	3		1	1		6	6		1	1	3
15 Lahu												
16 Oriya	4			1			6			1	1	3
17 Wa	3	3		1	1		6	6		1	1	3
18 Khun												
19 Lisu												
20 Lü	1			1			1			6	2	
21 Indo-Nepali	4			1			6			1	1	3
22 Naga	5			1			6			1	1	3
23 Punjabi	4	4		1	1		6	6		•	1	3
24 Minchia	3	3		1	1		6	6		1	1	3
25 Gujarati	5	5		1	1		6	6		1	1	3
26 Siamese	1	1		1	1		2	2		6	6	2
27 English	1	1		1	1		2	2		6	6	2
28 Kerala	1	1		4	4		6	6		3	3	1
29 Lao	1			1			1			6	2	
30 Lakher	4	4		1	1		6	6		1	1	3
31 Malays	1			1			2			6	2	
32 Selung	1	1		1	1		1	1		6	6	2
33 Miao	4	4		1	1		2	2		1	1	3

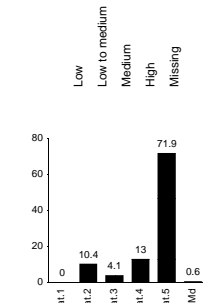
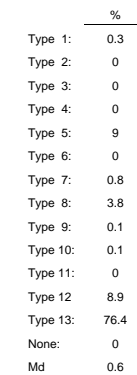
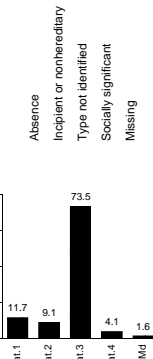
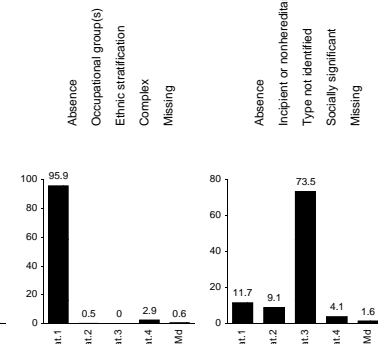
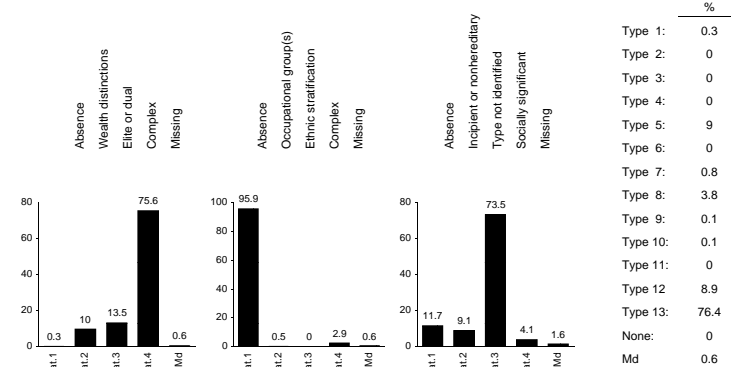
	KIN TYPE			INHERITANCE RULE FOR LAND			INHERITANCE DISTRIBUTION FOR LAND			INHERITANCE RULE FOR MOVABLE PROPERTY			INHERITANCE DISTRIBUTION FOR MOVABLE PROPERTY		
	M	A	R	M	A	R	M	A	R	M	A	R	M	A	R
5				5	5	3	4	4		3	3	2	4	4	
5				5	5	3	•	1		2	2	2	•	1	
5				4	3		4			4	3		4		
1				7	7	4	1	1		4	4	3	1	1	
5				•	•		•			•	•		•		
1				7	7	4	•	•		6	6	4	1	1	
1				•	7	4	•	1		1	1	1	•	•	
1				•	7	4	•	•		7	7	4	4	4	
2				7	7	4	1	1		4	4	3	1	1	
5				•	•	•	•	•		7	7	4	1	1	
1				7	7	4	•	•		7	7	4	1	1	
1				7	7	4	1	1		7	7	4	1	1	
5				5	5	3	1			2	2		1		
1				7	7	4	•	•		6	6	4	1	1	
5				4	3		1			4	3		1		
1				•	•	•	•	•		7	7	4	1	1	
5				4	3		1			5	3		3		
1				7	7	4	•	•		•	0	•	•	•	
5				7	7	4	•			4	3		1		
5				•	•	•	1	1		•	•	•	•	•	
1				7	7	4	•	•		4	4	3	1	1	

Myanmar (13)



	SUCCESSION OF LOCAL HEADMAN			SUCCESSION OF LOCAL HEADMAN TYPE			MEAN SIZE OF LOCAL COMMUNITIES			HIERARCHY BEYOND LOCAL COMMUNITY		
	M	A	R	M	A	R	M	A	R	M	A	R
1 Burmans	3	3	2	5	8	5	4	4	4	4	4	4
2 Karen	1	1	1	1	•	3	2	1	1	1	1	1
3 Shan	4	2		6	4	3	4	4	4	4	4	4
4 Chin	1	1	1	1	•	4	3	2	2	2	2	2
5 Mon	•	•		•	5	3	4	4	4	4	4	4
6 Kachin	1	1	1	1	3	2	2	2	2	2	2	2
7 Chinesen	•	•	•	•	•	8	5	•	5	5	5	5
8 Tamil	•	1	1	1	8	8	5	4	4	4	4	4
9 Hindi	7	7	2	9	8	8	5	5	5	5	5	5
10 Palaung	1	1	1	2	2	2	2	2	2	2	2	2
11 Telugu	•	1	1	1	8	8	5	4	4	4	4	4
12 Bengali Muslims	1	1		2	5	3	4	4	4	4	4	4
13 Kayah	1	1	1	1	3	2	1	1	1	1	1	1
14 Akha	1	1	1	2	4	4	3	1	1	1	1	1
15 Lahu												
16 Oriya	1	1		1	5	3	4	4	4	4	4	4
17 Wa	4	4	2	6	4	4	3	2	2	2	2	2
18 Khun												
19 Lisu												
20 Lü	3	2		5	4	3	4	4	4	4	4	4
21 Indo-Nepali	7	2		9	2	2	4	4	4	4	4	4
22 Naga	8	2		10	5	3	1	1	1	1	1	1
23 Punjabi	1	1	1	1	8	8	5	5	5	5	5	5
24 Minchia	6	6	2	8	5	5	3	2	2	2	2	2
25 Gujarati	•	1	1	1	8	8	5	4	4	4	4	4
26 Siamese	6	6	2	8	8	8	5	5	5	5	5	5
27 English	•	6	2	8	8	8	5	3	5	5	5	5
28 Kerala	2	2	1	4	8	8	5	3	3	3	3	3
29 Lao	3	3	2	5	4	3	4	4	4	4	4	4
30 Lakher	1	1	1	1	•	•	•	2	2	2	2	2
31 Malays	3	3	2	5	1	3	3	3	3	3	3	3
32 Selung	•	4	2	6	•	3	2	1	1	1	1	1
33 Miao	3	3	2	5	3	3	2	2	2	2	2	2

Myanmar (14)



	CLASS STRATIFICATION			CASTE STRATIFICATION			TYPE OF SLAVERY			TYPE OF POLITICAL SYSTEM			SOCIO-POLITICAL COMPLEXITY		
	M	A	R	M	A	R	M	A	R	M	A	R	M	A	R
1 Burmans	5	5	4	1	1	1	3	3	3	13	19	5	19	5	5
2 Karen	2	2	2	1	1	1	2	2	2	5	10	2	10	2	2
3 Shan	4	4	3	1	1	1	1	1	1	12	15	4	15	4	4
4 Chin	4	4	3	1	1	1	4	4	4	8	12	3	12	3	3
5 Mon	3	3	3	1	1	1	4	4	4	12	15	4	15	4	4
6 Kachin	4	4	3	1	1	1	3	3	3	8	11	3	11	3	3
7 Chinesen	•	5	4	•	1	1	•	1	1	13	18	4	18	4	4
8 Tamil	5	5	4	4	4	4	1	1	1	13	17	4	17	4	4
9 Hindi	4	4	3	4	4	4	1	1	1	13	17	4	17	4	4
10 Palaung	2	2	2	1	1	1	•	•	•	7	9	2	9	2	2
11 Telugu	5	5	4	4	4	4	1	1	1	13	17	4	17	4	4
12 Bengali Muslims	5	5	4	2	2	2	1	1	1	13	15	4	15	4	4
13 Kayah	2	2	2	1	1	1	2	2	2	5	9	2	9	2	2
14 Akha	1	1	1	1	1	1	1	1	1	1	7	2	7	2	2
15 Lahu															
16 Oriya	3	3	3	4	4	4	2	2	2	12	14	3	14	3	3
17 Wa	4	4	3	1	1	1	•	•	•	8	10	2	10	2	2
18 Khun															
19 Lisu															
20 Lü	4	4	3	1	1	1	1	1	1	12	14	3	14	3	3
21 Indo-Nepali	2	2	2	4	4	4	3	3	3	10	11	3	11	3	3
22 Naga	2	2	2	1	1	1	4	4	4	5	7	2	7	2	2
23 Punjabi	4	4	3	4	4	4	1	1	1	13	16	4	16	4	4
24 Minchia	2	2	2	1	1	1	1	1	1	7	9	2	9	2	2
25 Gujarati	5	5	4	4	4	4	•	1	1	13	16	4	16	4	4
26 Siamese	5	5	4	1	1	1	4	4	4	13	17	4	17	4	4
27 English	5	5	4	1	1	1	1	1	1	13	17	4	17	4	4
28 Kerala	5	5	4	4	4	4	1	1	1	9	15	4	15	4	4
29 Lao	4	4	3	1	1	1	1	1	1	12	13	3	13	3	3
30 Lakher	4	4	3	1	1	1	4	4	4	8	•	•	•	•	•
31 Malays	4	4	3	1	1	1	2	2	2	8	10	2	10	2	2
32 Selung	1	1	1	1	1	1	1	1	1	2	4	1	4	1	1
33 Miao	1	1	1	1	1	1	1	1	1	7	7	2	7	2	2